



**RV Breeze – multipurpose 28m steel catamaran designed and built in 2012 by a team of marine professionals with more than 25 years of experience.**

**RV Breeze is a suitable and cost efficient platform for hydrographic, geophysical and geotechnical work as well as subsea IMR work with ROV or AUV, laying and maintenance of subsea cables, near-shore seismic surveys etc.**

**Current facilities include: Spacious labs, 4m-height hangar, lifting equipment (hydraulic crane, winches, A-frame) and clear deck area of 130m<sup>2</sup>.**

**The propulsion system consists of 4 main engines / 4 propellers. Wave-piercing hull enables smooth transit in up to 24 knots. Vessel endurance (depending on mode) up to 25 days.**

**Dynamic positioning system with 2 main engines and 4 hydraulic tunnel thrusters.**

**4 single / 7 double cabins en-suite for ship crew and survey personnel, galley and wardroom. All internal quarters are air-conditioned with satellite television, telephone and internet.**



**ADVANCED SUBSEA is fully certified ISO 9001, ISO 14001, OHSAS 18001 by DNV**

**Your contact : Jacques Schoellkopf  
tel : +33 1 42 22 11 76 email : [jsk@advanced-subsea.com](mailto:jsk@advanced-subsea.com)**

**ADVANCED SUBSEA SAS**

**E-mail: [jsk@advanced-subsea.com](mailto:jsk@advanced-subsea.com)**

**Copyright 2000 - 2013**

**ADVANCED SUBSEA do BRASIL**

**Website: [www.advanced-subsea.com](http://www.advanced-subsea.com)**



# BREEZE

## MULTIPURPOSE SURVEY CATAMARAN



### Main Particulars:

Built: 2012  
 Flag: Russia  
 Port of Registry: Novorossiysk,  
 RFB 9025  
 Callsign: UBYI6  
 MMSI: 273350970  
 Length Overall: 28.7 m  
 Breadth Overall: 12 m  
 Draft: 1.0 m  
 Draft fully loaded 1.5 m

### Capacity:

Clear Deck: 130 m<sup>2</sup>, 5 t/m<sup>2</sup>  
 Deck Load 40 t  
 Fuel Oil: 19.7m<sup>3</sup>  
 Freshwater: Watermaker 1,2 t/day

### Speed and Consumption:

Top speed: 14 knots @ 1.3 t/day  
 Cruise speed: 10 knots @ 0.8 t/day  
 Survey speed: 0-4 knots @ 0.6 t/day  
 Range: 4200 nm  
 Endurance: Up to 25 days

### Machinery/Propulsion & Handling equipment:

Main Engines: 4 x 286 BHP  
 Propellers: 4 x 600 mm FPP  
 Bow thrusters: 2 x 300 mm FPP  
 Stern thrusters: 2 x 300 mm FPP  
 Gensets: 2 x 50 kW, 380V, 50Hz  
 1 x 85 kW, 380V, 50Hz  
 Hydraulic Crane 6,50t@3,7m  
 Deck / Stern 20,0 t SWL double drum &  
 Anchor Winch capstan  
 Winch (optional) 20,0 t SWL &  
 2400m@20mm  
 wire/umbilical  
 A-Frame (optional) Height 7,5 m / 15 t SWL

### Accommodation & Laboratory/Hangar:

3 x single cabins and 8 x double cabins  
 Mess area, Galley  
 Laboratory 40 m<sup>2</sup>  
 Hangar 30 m<sup>2</sup>, 4 m height

### Navigation Equipment:

1 x Radar Garmin GMR 1206 xHD (74nm range)  
 1 x Radar Garmin GMR 24 (45nm range)  
 1 x Garmin GHP 10 Gyro/Autopilot  
 1 x Garmin GSD 22 color Echosounder  
 2 x Garmin GPSMAP 4012 Digital Navigation / Chart  
 1 x NAVTEX Samyung SNX-300

### Communication equipment:

Fully compliant to GMDSS A2  
 1 x MF/HF Samyung SRG-2150  
 1 x VHF Garmin 200 i  
 1 x VHF&AIS Garmin300 i  
 2 x Standard Horizon HX-600S for deck operations  
 1 x SATCOM Iridium Open Pilot  
 1 x KVH Trac Vision M5 Satellite TV  
 Working CCTV, intercom and headsets for bridge communication.

### Survey Spread (upon request):

DGPS C-Nav 3050  
 Gyro IXSEA Octans  
 USBL Sonardyne Ranger 2  
 Navigation QPS QINSY  
 ROV Sperre SF15K (3000 m depth rated)  
 AUV Hugin-1000 (3000 m depth rated)  
 AVU Bluefin-21 (4500 m depth rated)  
 MBES Kongsberg EM3002  
 SSS/SBP Benthos C3D (2000 m depth rated)  
 HR Seismic Spread Geometrics P-Cable  
 CPT Roson 75/100 (2500 m depth rated)  
 CPT Neptune 5000 (3000 m depth rated)  
 15-meters Piston Corer

## SUITABLE APPLICATIONS:

- ROV / AUV support
- Geophysical and geotechnical surveys (Multibeam Echo Sounder, Subbottom Profiler, Side Scan Sonar, 2D/3D High Resolution Seismic, Magnetometer, CPT, sampling, etc.)
- Meteorological and ecological surveys (deployment and maintenance of buoys and bottom stations, water/benthic sampling)
- Communication cable installation/inspection/repair

ADVANCED SUBSEA is fully certified ISO 9001, ISO 14001, OHSAS 18001 by DNV

Your contact : Jacques Schoellkopf  
 tel : +33 1 42 22 11 76 email : [jsk@advanced-subsea.com](mailto:jsk@advanced-subsea.com)

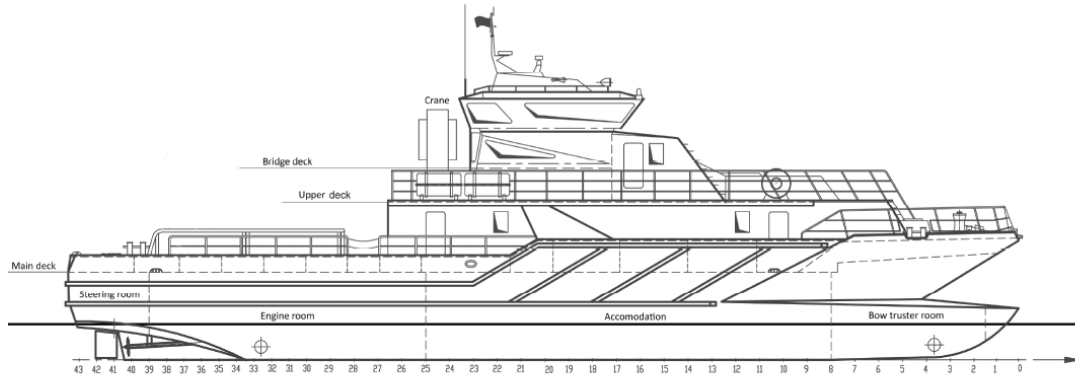
ADVANCED SUBSEA SAS

E-mail: [jsk@advanced-subsea.com](mailto:jsk@advanced-subsea.com)

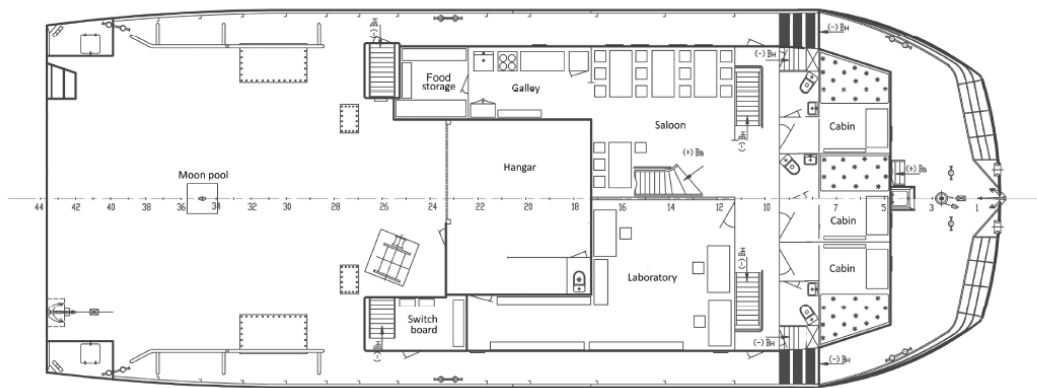
ADVANCED SUBSEA do BRASIL

Copyright 2000 - 2013

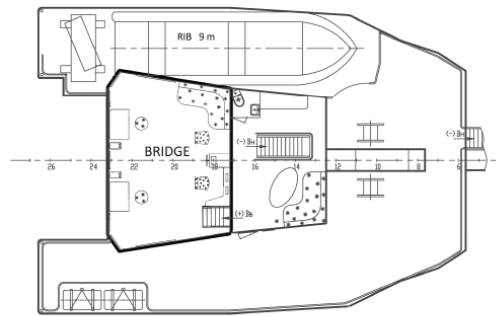
Website: [www.advanced-subsea.com](http://www.advanced-subsea.com)



**SIDE VIEW**



**MAIN DECK**



**BRIDGE & UPPER DECK**

ADVANCED SUBSEA is fully certified ISO 9001, ISO 14001, OHSAS 18001 by DNV

Your contact : Jacques Schoellkopf

tel : +33 1 42 22 11 76 email : [jsk@advanced-subsea.com](mailto:jsk@advanced-subsea.com)

**ADVANCED SUBSEA SAS**

E-mail: [jsk@advanced-subsea.com](mailto:jsk@advanced-subsea.com)

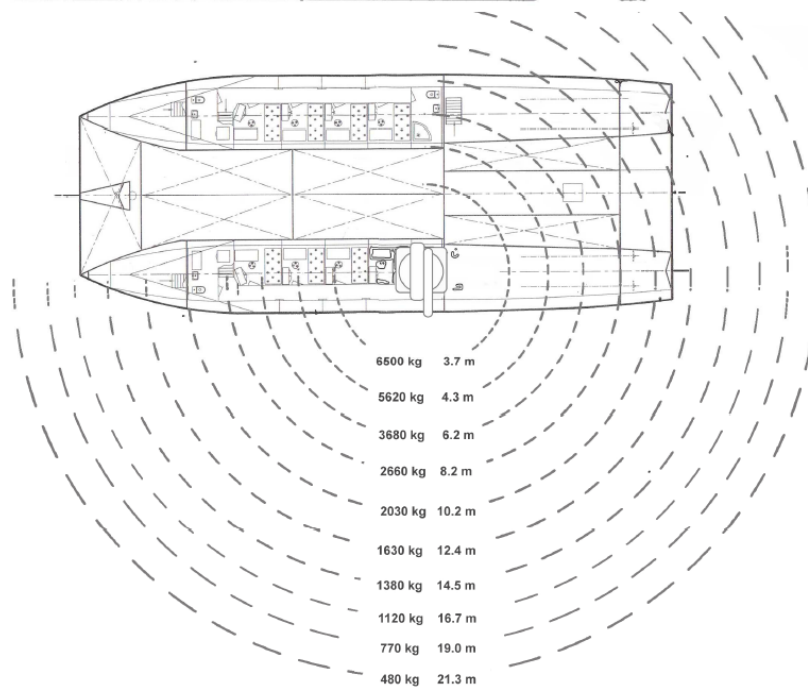
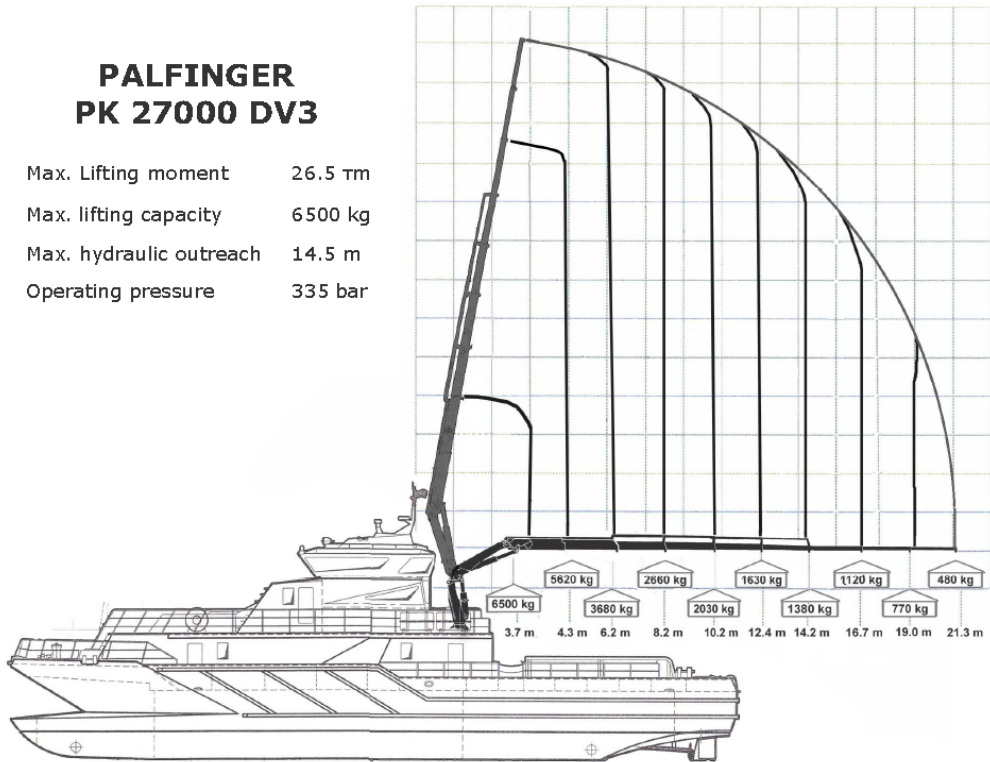
Copyright 2000 - 2013

**ADVANCED SUBSEA do BRASIL**

Website: [www.advanced-subsea.com](http://www.advanced-subsea.com)

## PALFINGER PK 27000 DV3

Max. Lifting moment	26.5 t.m
Max. lifting capacity	6500 kg
Max. hydraulic outreach	14.5 m
Operating pressure	335 bar



ADVANCED SUBSEA is fully certified ISO 9001, ISO 14001, OHSAS 18001 by DNV

Your contact : Jacques Schoellkopf  
tel : +33 1 42 22 11 76 email : [jsk@advanced-subsea.com](mailto:jsk@advanced-subsea.com)

ADVANCED SUBSEA SAS

E-mail: [jsk@advanced-subsea.com](mailto:jsk@advanced-subsea.com)

Copyright 2000 - 2013

ADVANCED SUBSEA do BRASIL

Website: [www.advanced-subsea.com](http://www.advanced-subsea.com)